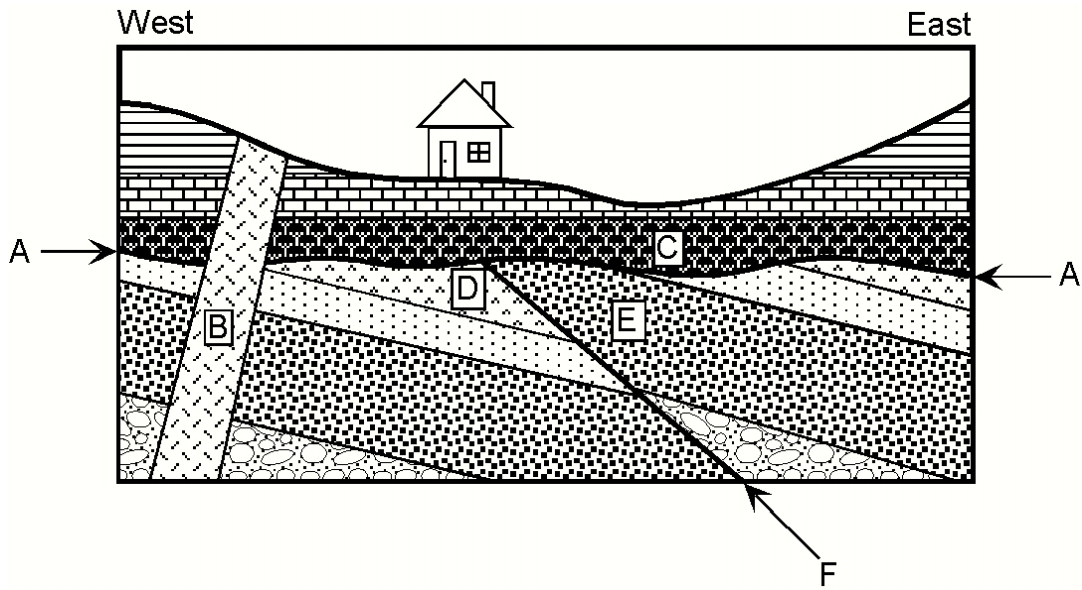


## Examples of Relative Dating Cross Sections

### Diagram #1

Oldest \_\_\_\_\_ Youngest

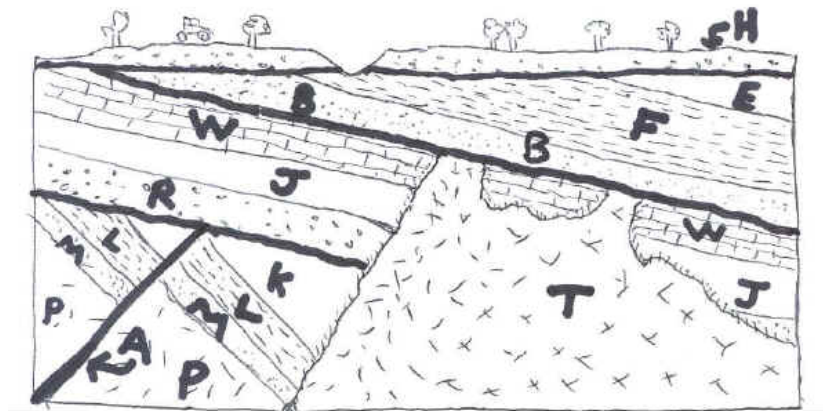
1. What law tells you that B is younger than E?
2. What law tells you that the oldest rocks are on the bottom and the youngest on top?



### Diagram #2

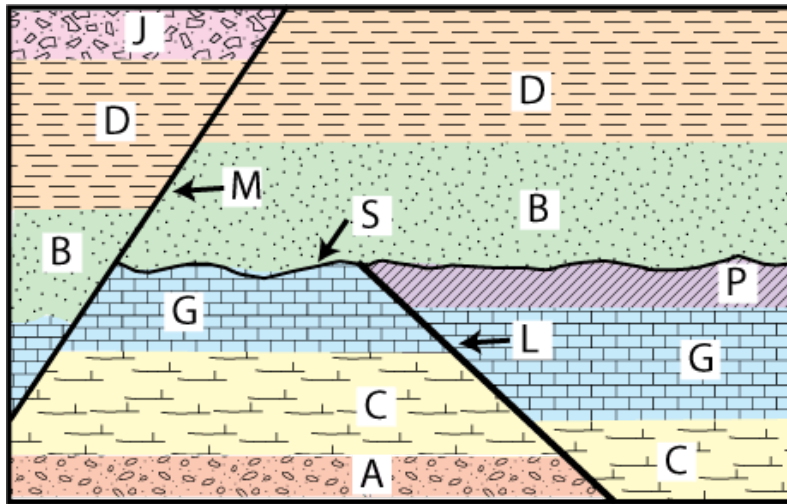
Oldest \_\_\_\_\_ Youngest

3. What law tells you that H is younger than E?
4. What two formations on this diagram demonstrate the principle of crosscutting?



### Diagram #3

Oldest \_\_\_\_\_ Youngest



### Diagram #4

Oldest \_\_\_\_\_ Youngest

5. Which layers are igneous?
6. Which layers are sedimentary?

